

CURRENT SCIENCE

Volume 130 Number 3

10 February 2026



C.S.
325

Key stages of green panchax development

Latest advances in breast cancer metastasis

Role of quartz reef textures in copper mineralisation

Current Science Association

Indian Academy of Sciences

CURRENT SCIENCE

202 **Highlights of the Issue**

GUEST EDITORIAL

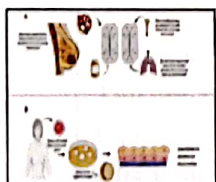
203 **Natural and biodynamic farming: the way forward**

Rohini Mattoo

MEETING REPORT

205 **Management of horticultural genetic resources under the Consortium Research Platform on Agrobiodiversity**

D. C. Manjunathgowda, T. K. Behera, S. Pandey and G. P. Singh



REVIEW ARTICLE

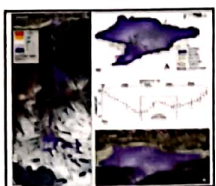
208 **Breast cancer metastasis research: current approaches and future possibilities**

Priyanka Balaji, Shruthi Ragothaman and Ravi Maddaly

RESEARCH ARTICLES

220 **Biostimulatory effect of PGPR on chlorantraniliprole degradation kinetics and soil enzymatic activities**

Sridevi Tutika and V. Himabindu

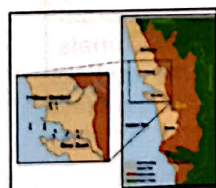


229 **Dharali debris flow on 5 August 2025, Uttarakhand: event reconstruction and geomorphic implications**

Vipin Kumar, Neha Chauhan, Abhisek Kumar Srivastav, Yaspal Sundriyal, Rajiv Sinha, Ravi Negi, Vikram Gupta, Akshaya Verma, Mohit Puniya and Rahul Devrani

239 **Embryonic and larval development of green panchax (*Aplocheilichthys blockii*): insights into the reproductive strategy of native killifish with biocontrol potential**

Grace George, S. Thiruvarasu and Binu Varghese



249 **Spatio-temporal variation in the distribution and community structure of mesozooplankton in Mandovi-Zuari estuarine complex**

Dattesh V. Desai, D'Costa Blanca and Sadaf Ansari

RESEARCH COMMUNICATIONS

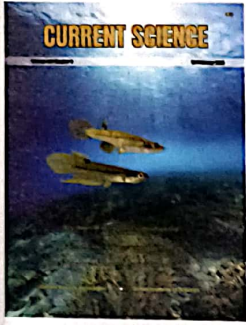
262 **Foraging energetics of alfalfa pollinating bees *Ceratina (Pithitis) smaragdula* F. and *Chalicodoma lanata* F.**

Dharam P. Abrol



271 **A study on the quartz reef textures and their relationship to copper mineralisation in the Bundelkhand Granitoid Complex, India**

P. Singh, E. Biswas, A. Shukla and D. K. Soni



COVER. Sexual dimorphism of *Aplocheilichthys blockii*. See page 239.

Indexed in CURRENT CONTENTS/GEOBASE/CHEMICAL ABSTRACTS/InMED/SCOPUS/
WEB OF SCIENCE/ISTOR