

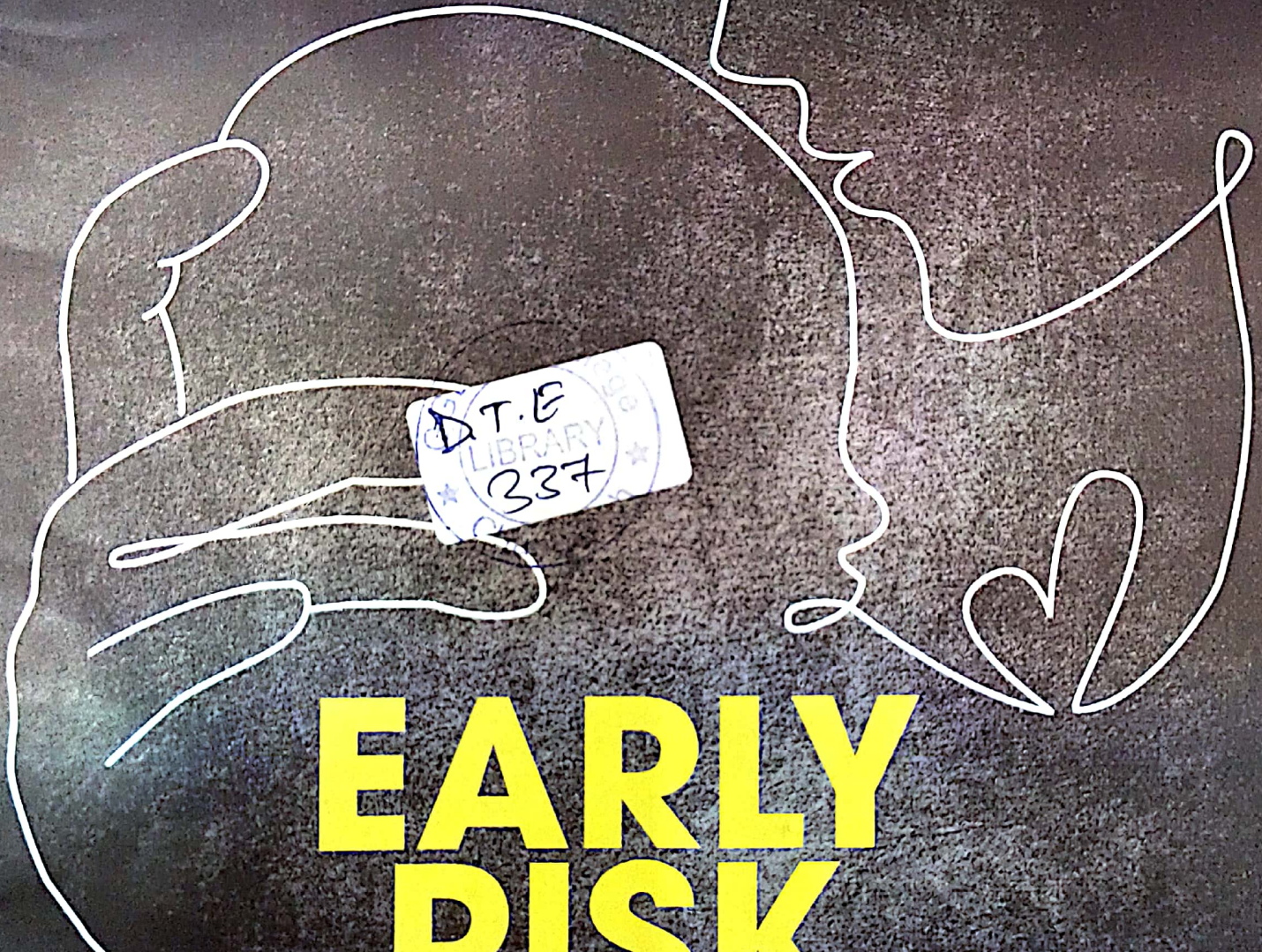
1-15 MARCH, 2026

Down To Earth

FORTNIGHTLY ON POLITICS OF DEVELOPMENT, ENVIRONMENT AND HEALTH

Subscriber copy, not for resale

₹80.00



EARLY RISK

So pervasive is environmental contamination that exposure now begins in infancy



MINING
Madhya Pradesh tiger corridor at risk

P16

SOLAR
Khejri trees axed for power

P22

ECO-RAGE
Climate impacts on mental health

P50



DownToEarth

Founded in 1992 to arm you with knowledge critical to shaping a better world

FOUNDER EDITOR Anil Agarwal

EDITOR Sunita Narain

MANAGING EDITOR Richard Mahapatra

CHIEF COPY EDITOR Snigdha Das

ASSOCIATE EDITOR Aditya Misra

SENIOR CREATIVE DIRECTOR Ajit Bajaj

SUPPLEMENT EDITOR Souparno Banerjee

CHIEF CARTOONIST Sorit Gupto

REPORTING TEAM Shagun, Akshit Sangomla, Pulaha Roy, Himanshu Nitnaware, Puja Das

SENIOR SUB EDITOR Dakshiani Palicha

WEB EDITORS Rajat Ghai, Preetha Banerjee, Nandita Banerji

DESIGN TEAM Chaitanya Chandan (Art Editor), Ritika Bohra (Assistant Art Editor), Tarun Sehgal (Senior Designer), Yogendra Anand (Senior Illustrator), Vineet Tripathi (Graphic Designer), Shri Krishan

PHOTO EDITOR Vikas Choudhary

PRODUCTION Rakesh Shrivastava, Gundhar Das

TECHNICAL SUPPORT Rajendra Rawat, Jaidev Sharma

MULTIMEDIA Joel Michael, Sunny Gautam, Shreya KA, Dhruval Parekh, Surangya Kaur, Danishmand Khan, Shrestha Raj

INFORMATION AND RESEARCH SUPPORT Kiran Pandey, Susan Chacko, Madhumita Paul, Lalit Maurya, Dayanidhi Mishra

CONSULTING EDITORS Anumita Roychowdhury, Vibha Varshney

Vol 34, No 20; Total No of Pages: 60

Editorial, subscriptions and advertisements:
Society for Environmental Communications,
41, Tughlakabad Institutional Area, New Delhi 110 062,
Phone: 91-11-40616000, 29955124,
29956110, 29956394, 29956399 | Fax: 91-11-29955879.
Email: editor@downtoearth.org.in

© 2026 Society for Environmental Communications. All rights reserved throughout the world. Reproduction in any manner is prohibited. Printed and published by Richard Mahapatra on behalf of Society for Environmental Communications. Printed at Viba Press Pvt. Ltd. C-66/3, Okhla Industrial Area, Phase-II, New Delhi - 110 020, India, and published at 41, Tughlakabad Institutional Area, New Delhi 110 062.

To subscribe, sms 'dte Subscribe' to 56070 or visit www.downtoearth.org.in/subscription

FOR ADVERTISEMENTS Jyoti Ghosh
jghosh@cseindia.org

FOR SUBSCRIPTIONS
KCR Raja, raja@cseindia.org



Contents



COVER STORY

30 What happens when mother's milk, the first food and first vaccine of babies, begins to mirror the load of environmental contaminants?

11 **Digest**
India sees higher than normal temperatures in February

14 **Interview**
What US' repeal of "endangerment finding" means for climate action

22 **Solar power**
Rajasthan villages speak against felling of *khejri* trees for solar plants

26 **Biodiversity**
Landmark assessment qualifies how businesses impact natural systems

28 **Issue of access**
A Chhattisgarh village forever reliant on temporary river crossings



40 **Patently absurd**
India pins its AI ambitions on data centres

44 **Opinion**
Amendments to Uttarakhand van panchayat rules regressive

58 **Civil Lines**
A new measure to inclusively determine poverty

◀ Cover design: Ajit Bajaj

Down To Earth does not endorse the content of advertisements printed in the magazine. All disputes are subject to the exclusive jurisdiction of competent courts and forums in Delhi/New Delhi only.



76

Mining projects threaten a vital tiger corridor in Madhya Pradesh

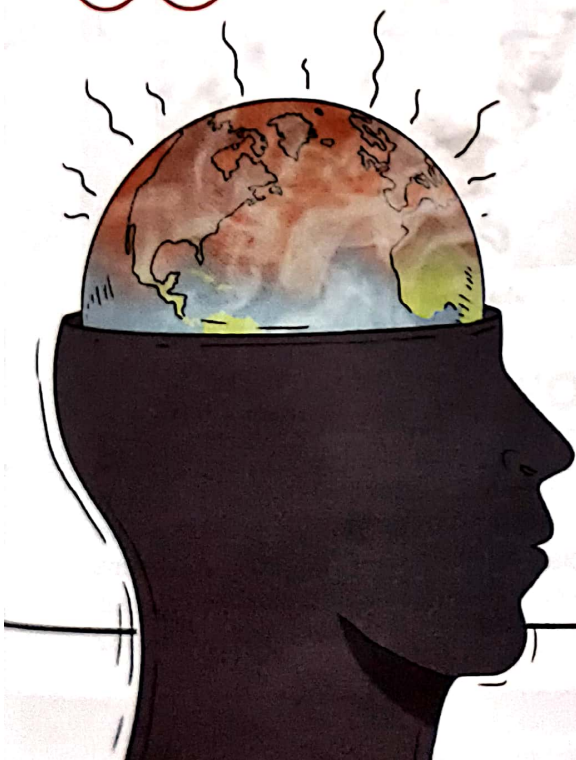
48

India can learn from China's strategic transition to clean energy



50

Distress caused by climate change impacts linked to rising aggression among youth



54

How residents of a Ladakh village became guardians of an annual avian visitor

