

CSIR-NIScPR



सिंहसंस्कृत  
CSIR  
भारत का प्रगतिशील संस्थान  
The Innovative Engine of India  
A CSIR PUBLICATION

Indian J Chem (Monthly)  
JULY 2025

CODEN: IJCN16 64 (7) 645-750 (2025)  
ISSN: 0019-5103 (Print); 2583-1321 (Online)  
indjchem@niscpr.res.in

# Indian Journal of Chemistry

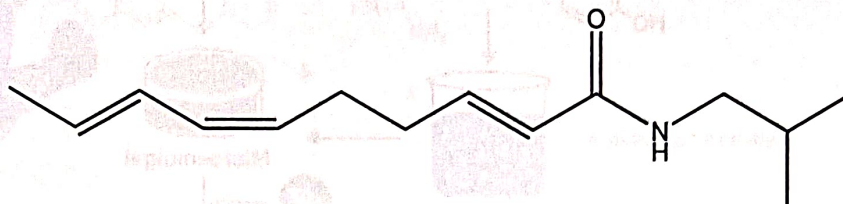
IJC  
42

<https://niscpr.res.in>

CSIR-National Institute of Science Communication and Policy Research  
New Delhi, INDIA



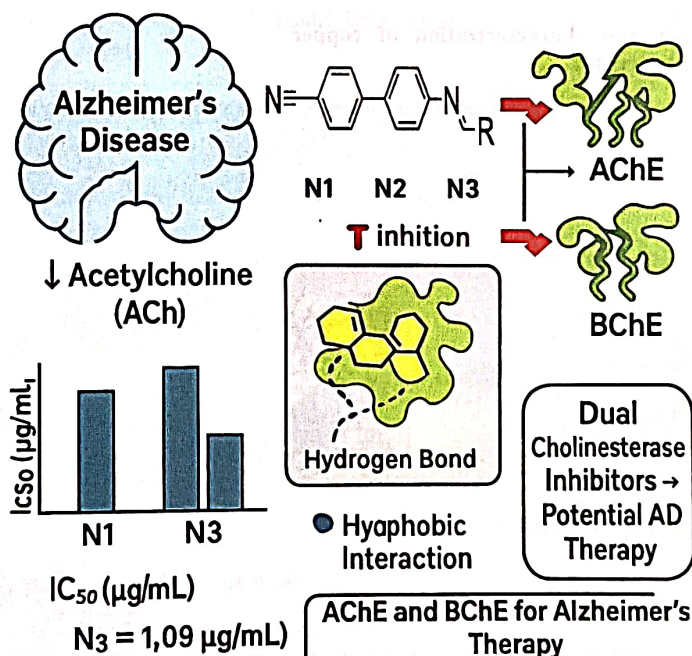
- 688 **Computational thermodynamics of Spilanthol as a COX-2 inhibitor: Docking, dynamics, and binding energy analysis**



Arun Kumar Patel, Nazneen Dubey & Aditya Ganeshpurkar\*

Shri Ram Institute of Technology-Pharmacy, Jabalpur 482 002, India

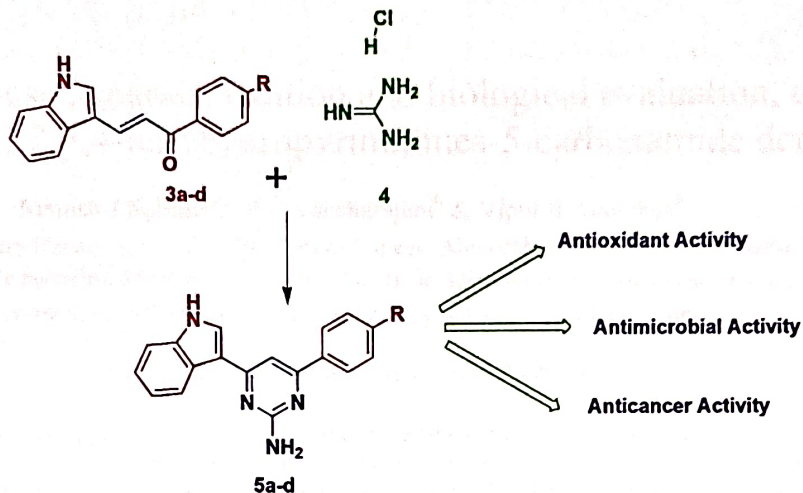
- 699 ***In silico* design, molecular docking and synthesis of novel [1,1-biphenyl]-4-carbonitril Schiff base derivatives as cholinesterase inhibitors**



Basma M Abd Razik, Mohammed Oday Ezzat\* & Jessica Shlimoon Hanna

Department of Chemistry, College of Education for Women, University of Anbar, 31001 Anbar, Iraq

- 724 Efficient and green approach for the synthesis of indolyl-pyrimidine derivatives and investigation of biological assays

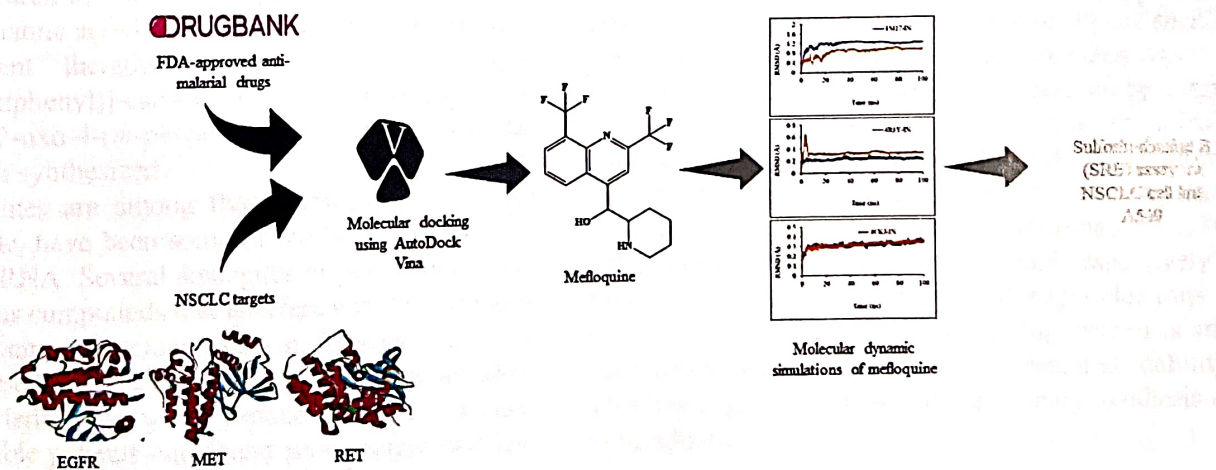


- A Study has successfully synthesized indolyl- pyrimidine derivatives with potent antimicrobial activity.
- The study identified bacteria that exhibited resistance to pyrimidine derivatives, suggesting their potential as a novel class of antibiotics.
- This study presents new opportunities for developing innovative therapies to combat antibiotics resistance in various bacterial species.

Prabhakar Chavan

Department of Studies and Research in Chemistry, Sahyadri Science College, Kuvempu University, Shivamogga 577 203, Karnataka, India

- 730 Repurposing FDA-approved antimalarial drugs: Mefloquine as a promising multi-targeted therapeutic for non-small cell lung cancer



Vicky Lone, Kanak Dayama, Pratik Khona & Uma D Kabra\*

Department of Pharmaceutical Chemistry, Parul Institute of Pharmacy, Parul University, Vadodara 391 760, Gujarat, India

Authors for correspondence are indicated by (\*)