

Corporate Citizen

CONTEMPORARY MANAGEMENT THOUGHTS

Pune - Vol. 11, Issue No.2 - July 2025 (Monthly) - Price ₹75/- Pages 84

www.corporatecitizen.in



ESG EXCLUSIVE
Prof. Amitabh Kundu, Economist and
Former Dean-School of Social Sciences, JNU



ESG SPECIAL

Greener Goals Smarter Moves

Discover exclusive interviews, dynamic panel discussions, and powerful excerpts from thought-provoking talks delivered by leaders and industry experts at the Global ESG Conclave 2025

VOICES OF ESG

- Anjana Adhikari
- Bhimashankar Shetkar
- Bhupinder Singh Mann
- C.S.C Sekhar
- D.P. Singh
- Dileep Sanghani
- Durgendra Singh Chauhan
- Gun Prakash
- Gunvant Patil
- H.K. Mishra
- H.P. Singh
- Hema Nirola
- Jitendra Sharma
- Kanika Baweja
- Krishan Bir Chaudhary
- Mallika Kumar
- Manish Sanghani
- Meenakshi Hooja
- Meenesh Shah
- P. Chandra Shekara
- P. S. Birthal
- Padma Shri Bharat Bhushan Tyagi
- Pawan Payal
- Pramod Kumar Chaudhary
- Praveen Tripathi
- R.G. Agarwal
- Rajvir Sharma
- Rakesh Arrawatia
- Ramdas Athawale
- Sagar Dharia
- Savitri Singh
- Trilochan Sastry
- Tripti Khanna
- Umakant Dash
- Vineeta Hariharan
- Yuvraj Mehta

CONTENTS

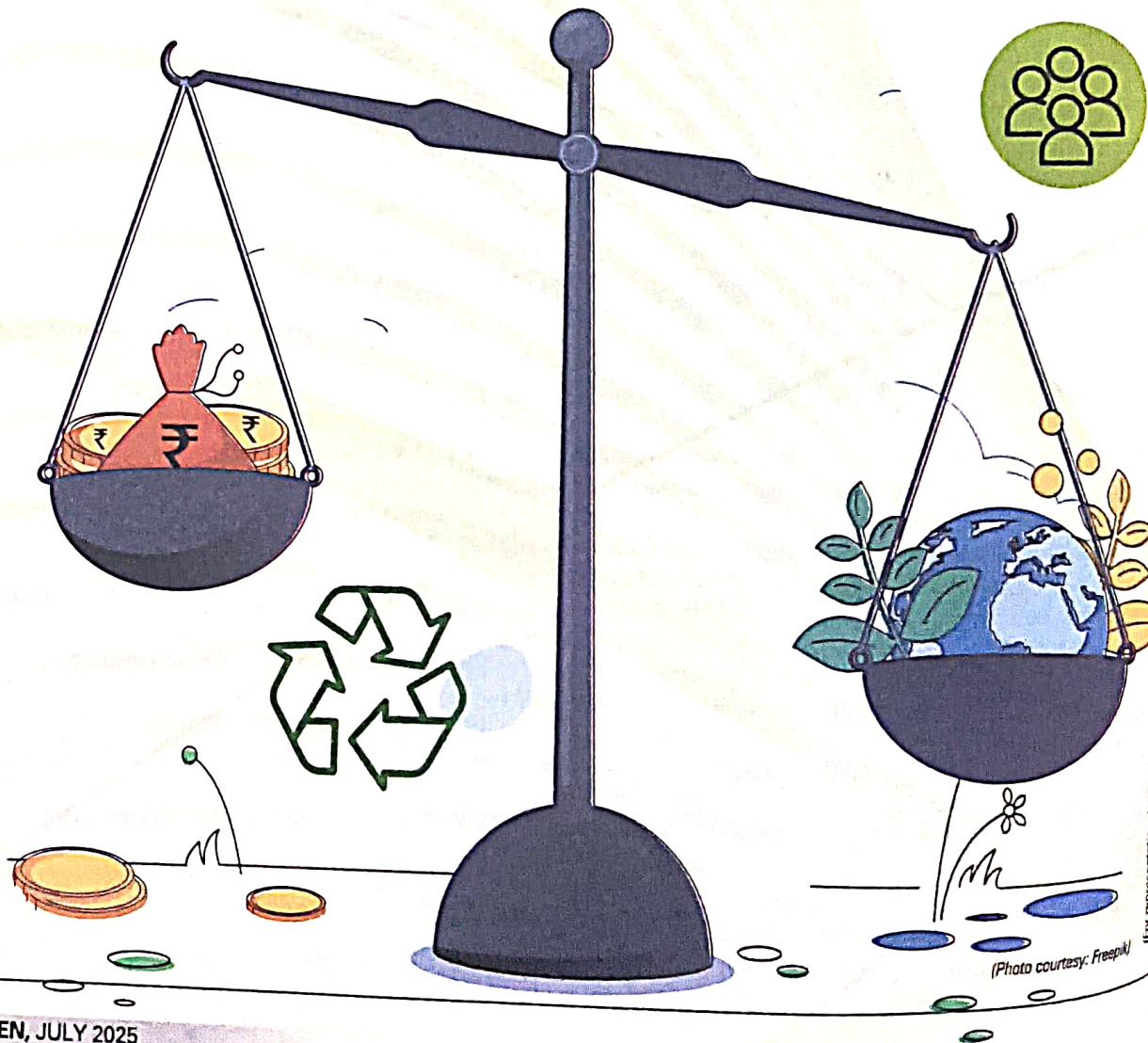
ESG SPECIAL

20



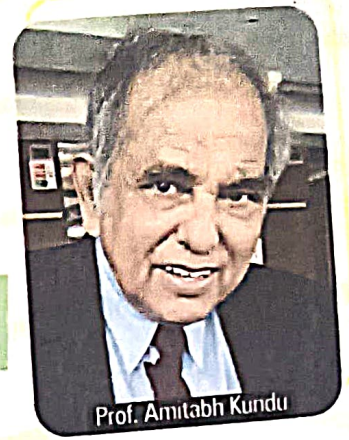
Greener Goals Smarter Moves

Discover exclusive interviews, dynamic panel discussions, and powerful excerpts from thought-provoking talks delivered by leaders and industry experts at the Global ESG Conclave 2025

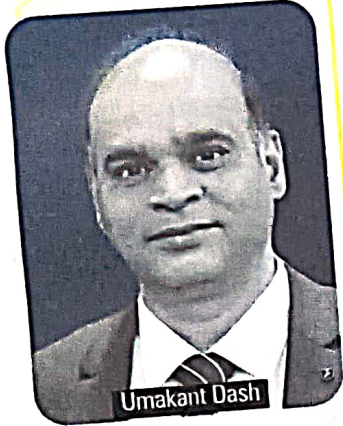


Part 1: ESG EXCLUSIVE

22: Amitabh Kundu, Economist and Former Dean-School of Social Sciences, Jawaharlal Nehru University (JNU)

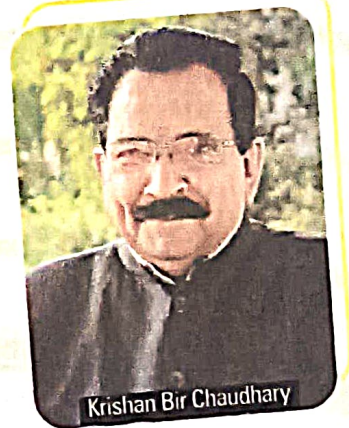


26: Umakant Dash, Director, Institute of Rural Management Anand (IRMA)



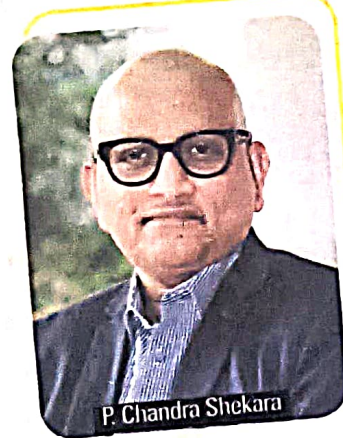
28: P. Chandra Shekara, Director General, Centre on Integrated Rural Development for Asia and the Pacific (CIRDAP)

30: Krishan Bir Chaudhary, Member, PM High Power Committee on MSP and Agri Reforms, GOI



32: H.P. Singh, Chairman, Confederation of Horticulture Associations of India (CHAI)

34: Trilochan Sastry, Founder, Centre for Collective Development (CCD) and Farmveda, a for-profit social enterprise



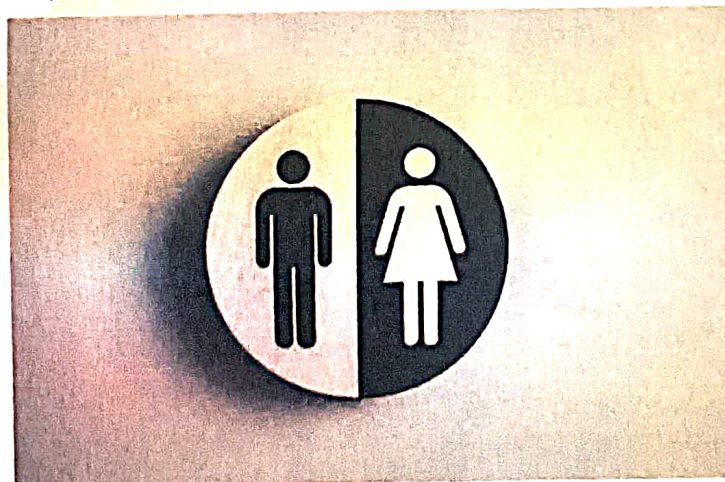
36: Hema Nirola, CEO, Druk Horticulture Pvt. Ltd.

38: Manish Sanghani, Chairman-Youth Wing, National Cooperative Union of India (NCUI) and VP, Bharatiya Janata Yuva Morcha, Gujarat

40: Pawan Payal, National Vice President, Rashtriya Kisan Progressive Association (RKPA)

Part 2: ESG SESSION

42: Panel Discussion — *Gender Equity, Social Impact and Responsibility: Beyond Compliance*



Part 3: ESG QUICK TAKEAWAYS

46: Excerpts from talks delivered by leaders and industry experts at the Global ESG Conclave 2025



(Photo by Fatema Alzeel on Unsplash)